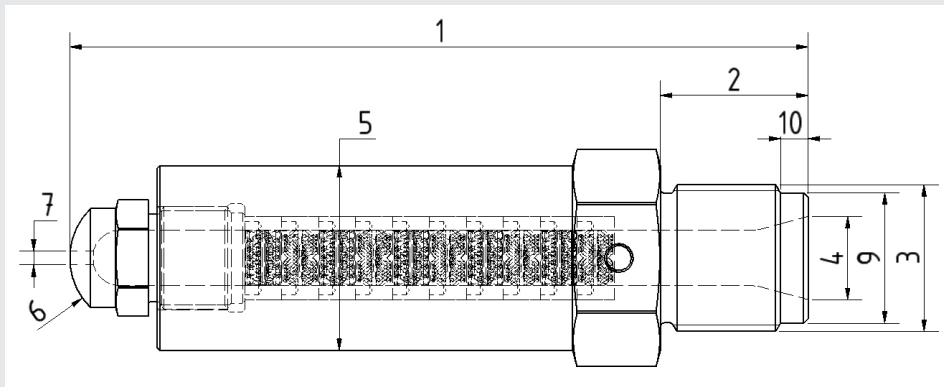
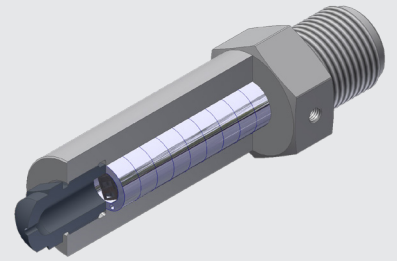


# Düsen mit Mischelementen Typ XPS

Massskizze

# Mixing nozzle - XPS

Order form



Maschine / Machine make and model

(1) Maschine  
Total length

(7) Durchmesser (1.5, 2.5, 3, 4, ...)  
Orifice (1.5, 2.5, 3, 4, ...)

siehe unten / see below

(2) Gewindelänge  
Thread length

(8) Ausführung innen / Internal design  
 Universal (GP) / Universal (GP)  
 Typ Polyamid(NRT) / Nylon (NRT)  
 Typ ABS / ABS

siehe unten / see below

(3) Gewindetyp (36 x 2, 1 - 1/2" -12, ...)  
Thread type (36 x 2, 1 - 1/2" -12, ...)

(4) Eingangsdurchmesser  
Rear opening

(9) Ø Zentrierdurchmesser  
Ø relief

(6) Durchmesser (12,7mm, 15mm, 19mm, 35 mm...)  
Radius (12,7mm, 15mm, 19mm, 35 mm...)

siehe unten / see below

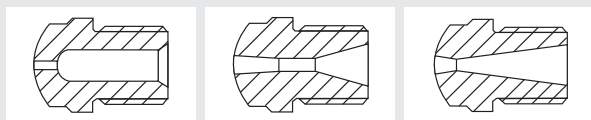


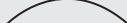
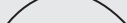
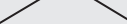

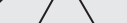
(10) Länge der Zentrierung  
Relief length

## Düsenköpfe

Wenn Sie einen anderen Radius oder eine andere Öffnung benötigen, verwenden Sie bitte die Referenz GP1 und geben Sie Ihren Radius und die Öffnungsbohrung an.

## Removable tip

If you want a radius and a non-standard orifice, use the generic reference GP1 and specify your radius and your orifice.

<p>(8) Typ Type</p> <p><input type="checkbox"/> Universal (GP) Universal (GP)</p> <p><input type="checkbox"/> Polyamid (NRT) Nylon (NRT)</p> <p><input type="checkbox"/> ABS (ABS) ABS (ABS)</p>  <p><input type="checkbox"/> Andere Others (specify)</p> <input type="text"/>	<p>Kopflänge Tip length</p> <p><input type="checkbox"/> 38 mm (1)</p> <p><input type="checkbox"/> 70 mm (2)</p> <p><input type="checkbox"/> 95 mm (3)</p> <p><input type="checkbox"/> 127 mm (4)</p>	<p>(6) Kopfkontur Radius</p> <p><input type="checkbox"/> 35 mm (8) </p> <p><input type="checkbox"/> 19 mm (7) </p> <p><input type="checkbox"/> 15 mm (6) </p> <p><input type="checkbox"/> 12,7 mm (5) </p> <p><input type="checkbox"/> 120° (4) </p> <p><input type="checkbox"/> 90° (3) </p> <p><input type="checkbox"/> 60° (2) </p> <p><input type="checkbox"/> andere / other ....</p>	<p>(7) Öffnungsbohrung Orifice</p> <p><input type="checkbox"/> 1,5 mm (I)</p> <p><input type="checkbox"/> 2,5 mm (J)</p> <p><input type="checkbox"/> 3 mm (K)</p> <p><input type="checkbox"/> 4 mm (L)</p> <p><input type="checkbox"/> 5 mm (M)</p> <p><input type="checkbox"/> 6 mm (N)</p> <p><input type="checkbox"/> 8 mm (O)</p> <p><input type="checkbox"/> 9,5 mm (P)</p> <p><input type="checkbox"/> andere / other ...</p>
--	--	---	---

GP	1	6	K
----	---	---	---

## Bestellbeispiel für Ihren Düsenkopf: GP16K

Kopf Typ universell (GP) - Länge 38mm (1) - Kopfradius 15mm (6) und Öffnungsbohrung 3 mm (K)

## Example: GP16K

Universal type (GP) - Tip length 38mm (1) - Radius 15mm (6) - Orifice 3 mm (K)