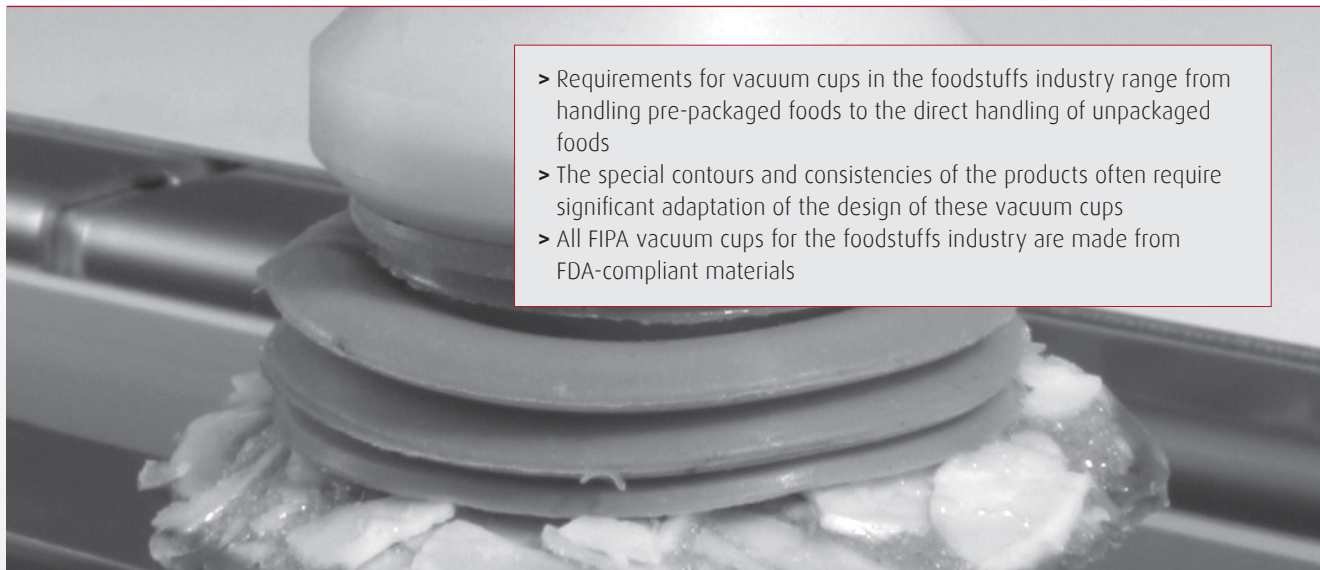




FIPA vacuum cups for the foodstuffs industry



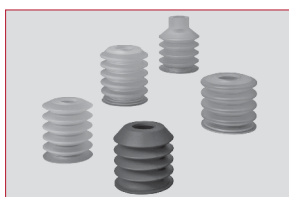
- > Requirements for vacuum cups in the foodstuffs industry range from handling pre-packaged foods to the direct handling of unpackaged foods
- > The special contours and consistencies of the products often require significant adaptation of the design of these vacuum cups
- > All FIPA vacuum cups for the foodstuffs industry are made from FDA-compliant materials



Vacuum cups for chocolates – Series SL-P

- > Flat and bellows vacuum cups
- > Extremely flexible and adaptable vacuum cup lip for leak-free sealing of three-dimensional product surfaces
- > Low-marking and FDA-compliant

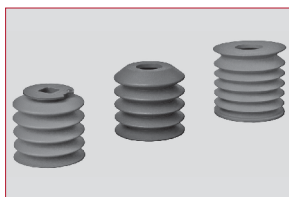
> For more information, see page 206



Vacuum cups for baked goods – Series SL-B

- > Bellows vacuum cups with multiple pleats allow for greater levelling adjustments and gentle product handling
- > Good holding strength through optimised lip geometry
- > FDA-compliant

> For more information, see page 208



Detectable vacuum cups (in event of breakage) for baked goods – Series SL-BD

- > This detectability provides optimum assurance that the product is not contaminated by vacuum cup components
- > Bellows vacuum cups with multiple pleats allow greater level adjustment and gentle product handling
- > Good holding strength through optimized lip geometry
- > FDA-compliant

> For more information, see page 210



Vacuum cups for eggs – Series SL-E

- > Bellows vacuum cups in a design specially optimized for handling eggs
- > Gentle attachment to the product and lengthy lifting action thanks to very long vacuum stroke
- > FDA-compliant

> For more information, see Page 212



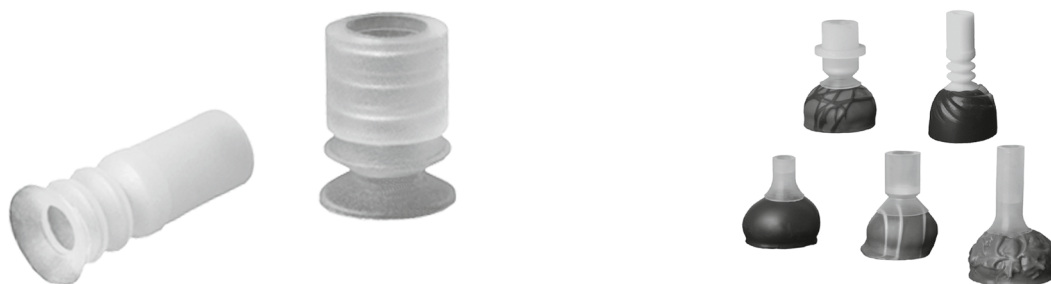
Vacuum cups for semi-solid foods – Series SL-K

- > Bellows vacuum cups for handling semi-solid foodstuffs such as cheese or meat
- > Interlocking, snap-in supporting grid prevents deformation or aspiration of the product
- > FDA-compliant

> For more information, see page 213



Vacuum cups for chocolates – Series SL-P



Product Description

Flat and bellows vacuum cups made of FDA-approved material for handling delicate products with heavily textured surfaces.


Advantage

- > Gentle handling of the most sensitive surfaces
- > Also suitable for three-dimensional products (e.g. chocolates)

Technical Data

| Item no. | Model / Lip dimensions |  | Material / color | Number of bellows |
|---|------------------------|---|------------------|-------------------|
| Flat vacuum cups – Series SL-PF | | | | |
| 107.016.008._* | SL-PF-16 | 2,4 | SI (tr) | -- |
| 102.018.345._* | SL-PF-18 | -- | SI (tr) | -- |
| 107.018.004._* | SL-PF-18A | -- | SI (tr) | -- |
| 102.022.043._* | SL-PF-22 | 5 | SI (tr) | -- |
| Bellows vacuum cups – Series SL-PB | | | | |
| 21.012.079._* | SL-PB-12 | 7 | SI (w), SI (tr) | 2,5 |
| 27.016.001._* | SL-PB-16 | 6 | SI (tr) | 1,5 |

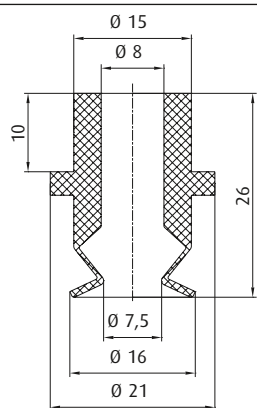
Accessories

| Item no. |  Suitable fittings | | | | | |
|---|---|------------------|------------------|------------------|------------------|------------------|
| | M5-male | M10-male | G1/8-male | G1/8-female | G1/4-male | G1/4-female |
| Flat vacuum cups – Series SL-PF | | | | | | |
| 107.016.008._* | -- | -- | 270.132 (p. 455) | 270.114 (p. 460) | 270.043 (p. 463) | 270.178 (p. 470) |
| 102.018.345._* | 270.443 (p. 448) | -- | 270.238 (p. 455) | 270.110 (p. 460) | 270.534 (p. 463) | -- |
| 107.018.004._* | 270.399 (p. 448) | -- | 270.033 (p. 454) | 270.478 (p. 459) | -- | -- |
| 102.022.043._* | -- | -- | 270.112 (p. 458) | 270.114 (p. 460) | 270.113 (p. 464) | 270.178 (p. 470) |
| Bellows vacuum cups – Series SL-PB | | | | | | |
| 21.012.079._* | 270.443 (p. 448) | -- | 270.238 (p. 455) | 270.110 (p. 460) | 270.534 (p. 463) | -- |
| 27.016.001._* | 270.244 (p. 448) | 270.177 (p. 454) | -- | -- | 270.451 (p. 464) | 270.452 (p. 470) |

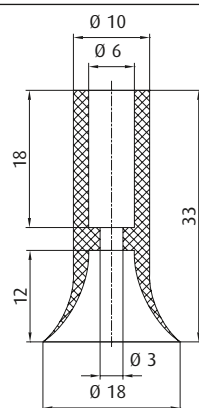
* When ordering please add the appropriate material code to the item no. You will find it in the foldout.



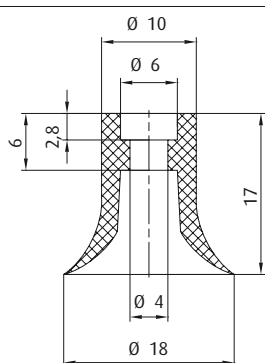
Dimensions



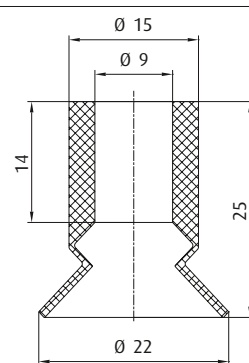
Flat vacuum cups – Series SL-PF
Ø 16 mm



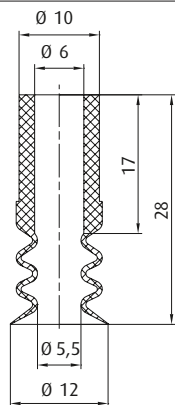
Flat vacuum cups – Series SL-PF
Ø 18 mm



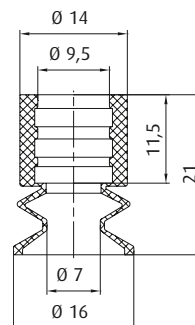
Flat vacuum cups – Series SL-PF
Ø 18A mm



Flat vacuum cups – Series SL-PF
Ø 22 mm



Bellows vacuum cups – Series SL-PB
Ø 12 mm



Bellows vacuum cups – Series SL-PB
Ø 16 mm

* When ordering please add the appropriate material code to the item no. You will find it in the foldout.



Vacuum cups for baked goods – Series SL-B



Product Description

Bellows vacuum cups especially suitable for baked goods such as bread, rolls, pizza and doughnuts.


Advantage

- > Large degree of leveling
- > Gentle attachment to the product
- > Good holding strength through optimised lip geometry
- > FDA-compliant


Ordering notes

Matching assembly aid for special fitting 270.419: Item No. 90.007

Technical Data

| Item no. | Model / Lip dimensions |  | Number of bellows | Material / color |
|---------------|------------------------|---|-------------------|------------------|
| 25.038.016._* | SL-B-38 | 24 | 4,5 | SI (tr) |
| 27.039.017._* | SL-B-38A | 20 | 5,5 | SI (tr) |
| 25.040.043._* | SL-B-40 | 24 | 4,5 | SI (tr) |
| 25.040.058._* | SL-B-40A | 25 | 4,5 | SI (bl) |
| 21.060.074._* | SL-B-60 | 12 | 2,5 | SI (tr) |

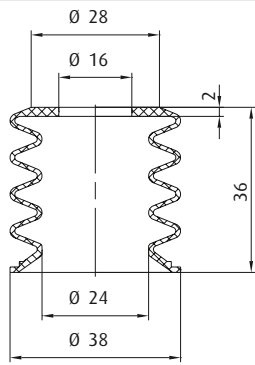
Accessories

| Item no. |  Suitable fittings | | | |
|---------------|---|------------------|------------------|------------------|
| | G1/4-male | G1/4-female | G1/2-male | Without |
| 25.038.016._* | 270.183 (p. 469) | 270.182 (p. 473) | -- | 270.419 (p. 477) |
| 27.039.017._* | 270.183 (p. 469) | 270.182 (p. 473) | -- | 270.419 (p. 477) |
| 25.040.043._* | 270.183 (p. 469) | 270.182 (p. 473) | -- | 270.419 (p. 477) |
| 25.040.058._* | 270.183 (p. 469) | 270.182 (p. 473) | -- | 270.419 (p. 477) |
| 21.060.074._* | -- | -- | 270.372 (p. 476) | -- |

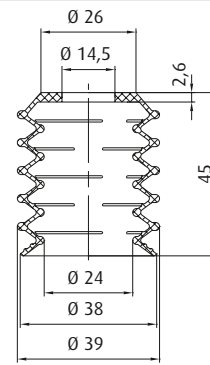
* When ordering please add the appropriate material code to the item no. You will find it in the foldout.



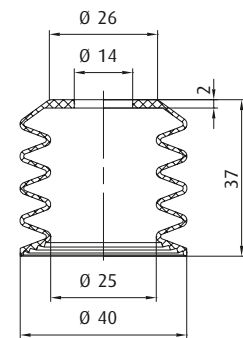
Dimensions



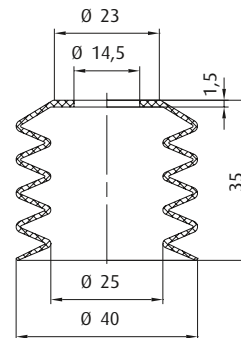
Ø 38 mm



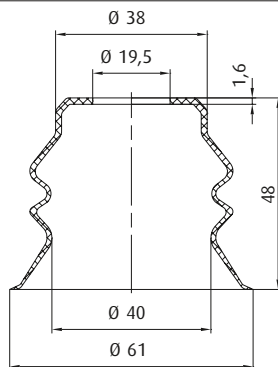
Ø 38A mm



Ø 40 mm



Ø 40A mm



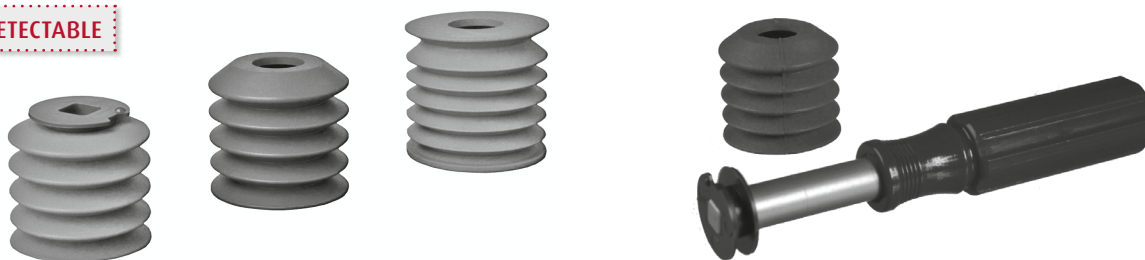
Ø 61 mm

* When ordering please add the appropriate material code to the item no. You will find it in the foldout.



Detectable vacuum cups for baked goods – Series SL-BD

DETECTABLE



Product Description

Bellows vacuum cups especially suitable for baked goods such as bread, rolls, or pizza. The vacuum cup material used is a special mixture that can be detected, for example by metal detectors from SAFELINE, and then separated and discarded.

Advantage

- > Detectable, and thus optimum assurance that the product is not contaminated by vacuum components
- > FDA-compliant

Ordering notes

Matching assembly aid for special fitting 270.419: Item No. 90.007

Technical Data

| Item no. | Model / Lip dimensions |  | Number of bellows | Material / color |
|---------------|------------------------|---|-------------------|------------------|
| 25.035.069._* | SL-BD-35 | 25 | 4,5 | SI (r) |
| 25.040.066._* | SL-BD-40 | 28 | 4,5 | SI (br), SI (bl) |
| 25.042.067._* | SL-BD-42 | 23 | 5,5 | SI (br) |

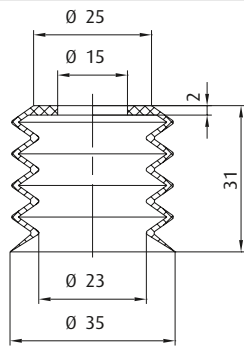
Accessories

| Item no. | Without |
|---------------|------------------|
| 25.035.069._* | 270.419 (p. 477) |
| 25.040.066._* | 270.419 (p. 477) |
| 25.042.067._* | 270.419 (p. 477) |

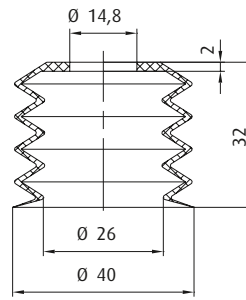
* When ordering please add the appropriate material code to the item no. You will find it in the foldout.



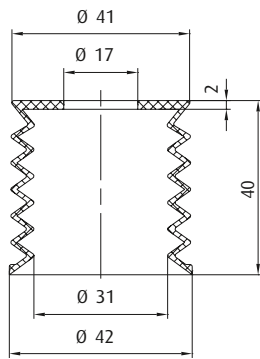
Dimensions



Ø 35 mm



Ø 40 mm



Ø 42 mm

* When ordering please add the appropriate material code to the item no. You will find it in the foldout.




Vacuum cups for eggs – Series SL-E




Product Description

Bellows vacuum cups made of FDA-compliant silicone in a design specially optimised for handling eggs. Very long vacuum cup stroke.

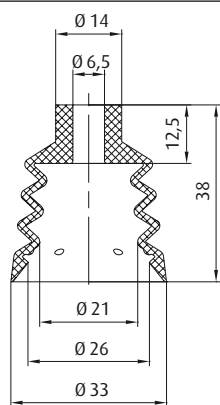
Technical Data

| Item no. | Model / Lip dimensions |  | Number of bellows | Material / color |
|---------------|------------------------|---|-------------------|------------------|
| 27.033.008._* | SL-E-33 | 16 | 3,5 | SI (tr) |
| 27.034.023._* | SL-E-34 | 39 | 2,5 | SI (r) |

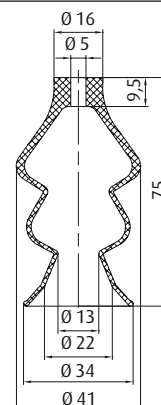
Accessories

| Item no. |  Suitable fittings | | | | |
|---------------|---|------------------|------------------|------------------|------------------|
| | M5-male | G1/8-male | G1/8-female | G1/4-male | G1/4-female |
| 27.033.008._* | -- | 270.132 (p. 455) | 270.114 (p. 460) | 270.208 (p. 464) | 270.178 (p. 470) |
| 27.034.023._* | 270.443 (p. 448) | 270.238 (p. 455) | 270.110 (p. 460) | 270.534 (p. 463) | -- |

Dimensions



Ø 33 mm



Ø 34 mm

* When ordering please add the appropriate material code to the item no. You will find it in the foldout.



Bellows vacuum cups for semi-solid foods – Series SL-K




Product Description

Bellows vacuum cups of FDA-approved silicone for handling semi-solid foods such as cheese or meat. Interlocking snap-in supporting grid prevents deformation or aspiration of the product.


Ordering notes

Optional accessory supporting grid made of V2A must be ordered separately

Technical Data

| Item no. | Model / Lip dimensions |  | Number of bellows | Material / color |
|--------------|------------------------|---|-------------------|------------------|
| 23.035.195.* | SL-K-35 | 13 | 1,5 | SI (tr) |
| 23.040.190.* | SL-K-40 | 12 | 1,5 | SI (tr) |
| 23.050.196.* | SL-K-50 | 12 | 1,5 | SI (tr) |
| 23.063.187.* | SL-K-62 | 15 | 1,5 | SI (tr) |
| 23.075.197.* | SL-K-75 | 9 | 1,5 | SI (tr) |
| 23.085.198.* | SL-K-85 | 12 | 1,5 | SI (tr) |

Accessories

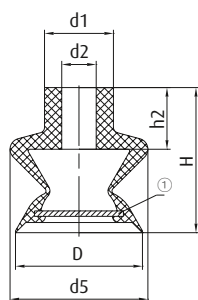
| Item no. |  Suitable fittings | | Suitable support grid (stainless steel) |
|--------------|---|------------------|---|
| | G1/4-male | G1/4-female | |
| 23.035.195.* | 270.451 (p. 464) | 270.452 (p. 470) | 78.504 (p. 512) |
| 23.040.190.* | 270.451 (p. 464) | 270.452 (p. 470) | 78.505 (p. 512) |
| 23.050.196.* | 270.216 (p. 470) | -- | 78.506 (p. 512) |
| 23.063.187.* | 270.451 (p. 464) | 270.452 (p. 470) | 78.503 (p. 512) |
| 23.075.197.* | 270.216 (p. 470) | -- | 78.507 (p. 512) |
| 23.085.198.* | 270.216 (p. 470) | -- | 78.508 (p. 512) |

Continued on the next page →

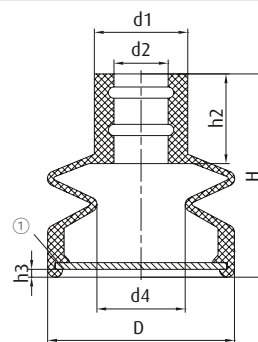
* When ordering please add the appropriate material code to the item no. You will find it in the foldout.



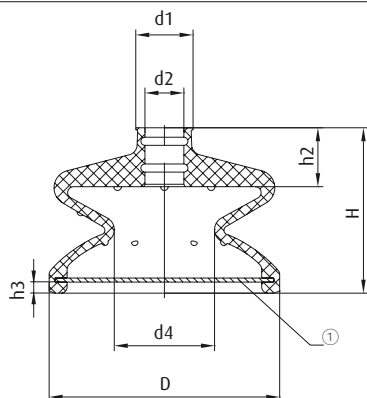
Dimensions



Ø 35 mm



Ø 40 | 50 mm



Ø 62 | 75 | 85 mm

① = Optional accessory: Support grid made of V2A

| Item no. | Ø D [mm] | Ø d1 [mm] | Ø d2 [mm] | Ø d4 [mm] | Ø d5 [mm] | H [mm] | h2 [mm] | h3 [mm] |
|---------------|----------|-----------|-----------|-----------|-----------|--------|---------|---------|
| 23.035.195._* | 35 | 19 | 9,5 | -- | 38 | 40 | 17 | -- |
| 23.040.190._* | 40 | 25 | 11 | 18 | -- | 54 | 22 | 2 |
| 23.050.196._* | 50 | 25 | 14,5 | 23 | -- | 54 | 24 | 2 |
| 23.063.187._* | 62 | 25 | 11 | 28 | -- | 46 | 22 | 2 |
| 23.075.197._* | 75 | 25 | 14,5 | 33 | -- | 53 | 28 | 4 |
| 23.085.198._* | 85 | 21 | 14,5 | 37 | -- | 61 | 22 | 4 |

* When ordering please add the appropriate material code to the item no. You will find it in the foldout.