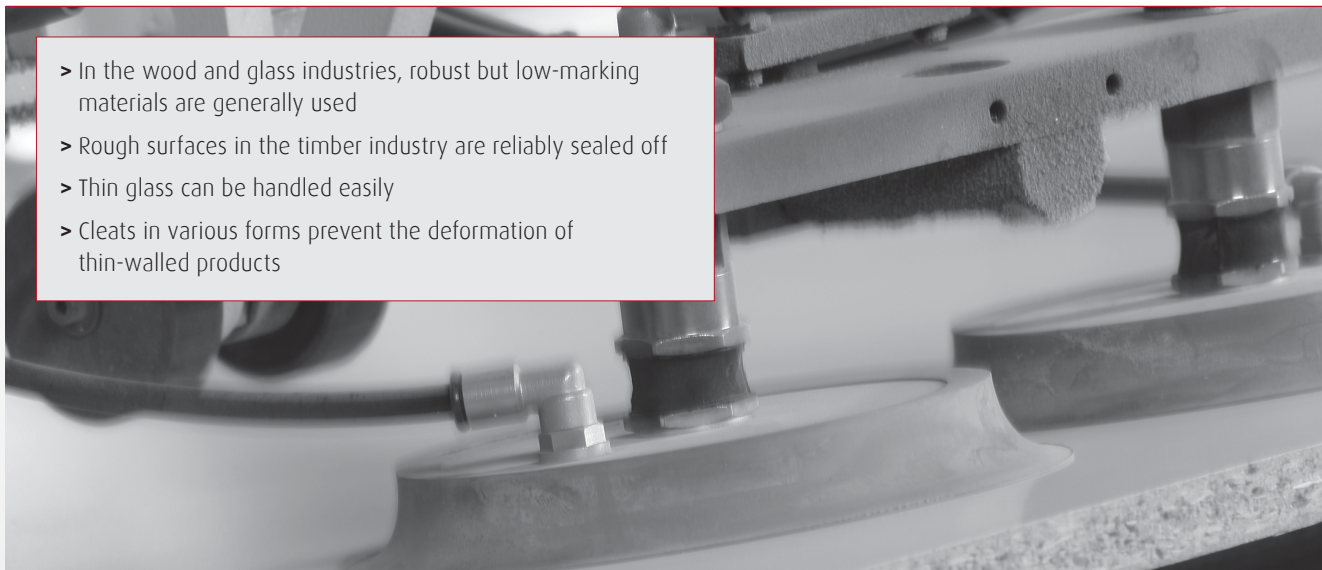




FIPA vacuum cups for the wood and glass industry



- > In the wood and glass industries, robust but low-marking materials are generally used
- > Rough surfaces in the timber industry are reliably sealed off
- > Thin glass can be handled easily
- > Cleats in various forms prevent the deformation of thin-walled products



Flat vacuum cups for textured surfaces – Series SFU-R

- > Optimum sealing of rough and uneven surfaces due to very fine sealing lip
- > Enhanced safety due to two-fold, internal safety sealing lip
- > Wear resistant materials
- > Interlocking, snap-in retaining plate provides for quick and inexpensive replacement of the sealing lip

> For more information, see page 183



Patented flat vacuum cups for porous products – Series SFU-RT

- > Separation of porous plate materials by simultaneous suction and selective blowing
- > Enhanced safety due to double, internal safety sealing lip
- > Interlocking, snap-in retaining plate provides for quick and inexpensive replacement of the sealing lip

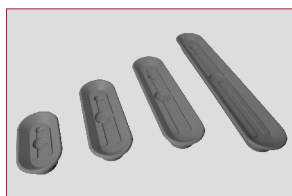
> For more information, see page 184



Oval vacuum suction plates for textured surfaces – Series SOPL-R

- > Leak-free gripping of many problematic product surfaces thanks to extremely flexible, thinly tapered sealing lip
- > Enhanced safety due to vulcanized carrier plate
- > Significantly better suction force compared to round vacuum cups of the same width

> For more information, see page 185



Oval vacuum suction plates – Series SOPL-S and SOPL-A

- > Stable and robust construction
- > Enhanced safety due to vulcanized carrier plate (available in steel and aluminum)
- > Available in: NBR (low-marking) and NR (wear resistant)
- > Significantly better suction force compared to round vacuum cups of the same width

> For more information, see page 186



Flat vacuum suction plates with fine lips – Series SFPL-F

- > Gentle handling of sensitive products thanks to long, flexible sealing lip
- > Enhanced safety due to vulcanized steel carrier plate
- > Thread-free carrier plate enables attachment of individual connections
- > Low-marking material, NBR, gray

> For more information, see page 188



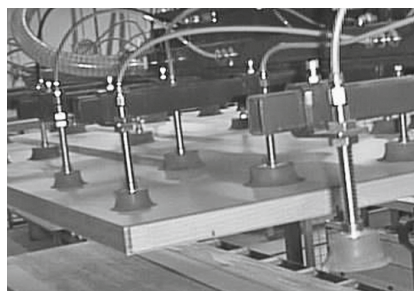
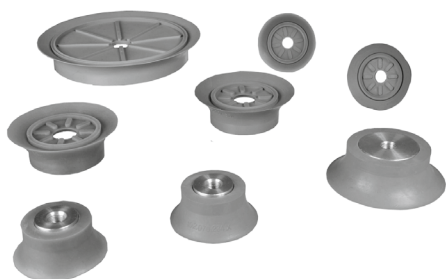
| | |
|---|--|
|  | <p>Bellows vacuum suction plates, Softgrip – Series SBPL-SG</p> <ul style="list-style-type: none"> > Very gentle handling of sensitive products through highly flexible bellows cladding > Combines the flexibility of bellows vacuum cups with the stability of flat vacuum suction plates > Bellow provides good compensation for small differences > Central support block with safety sealing lip ensures a firm grip > Interlocking, snap-in special carrier plate increases the strength of the connection to the vacuum gripper and allows the gripper to be replaced quickly and cost-effectively > Drilled carrier plate allows the attachment of individual screw threads <p>> For more information, see page 190</p> |
|  | <p>Short-stroke vacuum cups SFK-G</p> <ul style="list-style-type: none"> > Flat vacuum cups with a minimal stroke for flat, sensitive surfaces > Cleats help prevent warping of the product and increase lateral stability > Available in: NBR, SI and FKM > Connection via an interlocking, snap-in aluminum plate enables quick, cost-effective and tool-free replacement > Particularly suitable for use in clamping elements <p>> For more information, see page 191</p> |
|  | <p>Temperature-resistant felt coated vacuum cups – Series SX-F</p> <ul style="list-style-type: none"> > Extremely low marking thanks to special felt coating > Highest temperature resistance (FKM for short-term exposure to 350 °C; special Silicone with vapor-deposited Silicone barrier made of aluminum for short-term exposure to 550 °C) > Connection up to Ø 70 mm by means of plug nipple, from Ø 90 mm firmly screwed <p>> For more information, see page 192</p> |
|  | <p>Vacuum suction plates with TPU sealing lip – Series SP-PLT</p> <ul style="list-style-type: none"> > Handling of heavy loads with smooth, even surfaces (e.g. metal, glass, stone and so-called white goods) > Very long service life thanks to low-wear material > Almost mark-free > Good oil-, hydrolysis- and ozone-resistance <p>> More information from page 86</p> |
|  | <p>FIPA surface grippers</p> <ul style="list-style-type: none"> > Wide range of standard products as well as rapid implementation of customized solutions > Finely graded series for the handling of dense or porous work materials > Intelligent valve technology allows unoccupied suction openings to be sealed, thereby saving energy > Contamination-proof design ensures high availability and process safety > Suitable for fast cycle times > Fast and non-destructive exchange of vacuum mats ensures high productivity with minimal setup time <p>> More information from page 106</p> |

The vacuum cups listed here represent a specialized selection for this application.
Other vacuum cups suitable for the wood and glass industry can be found under „Vacuum cups by size“

[illegible]



Flat vacuum cups for textured surfaces – Series SFU-R



Product Description

Flat vacuum cups with safety sealing lips to handle rough surfaces, as well as smooth but very uneven products. Connection via an interlocking, snap-in aluminum plate

Advantage

- > Leak-free gripping of many difficult product surfaces thanks to extremely flexible, thinly tapered sealing lip
- > High stability under lateral forces
- > Optimum process reliability due to additional double lip seal
- > Cleats help prevent warping of the product
- > Cost-effective, tool-free changing of worn seals

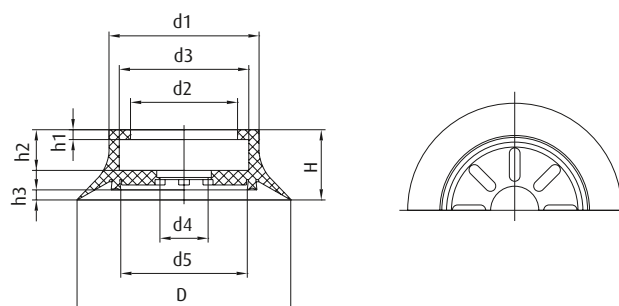
Technical Data

| Item no. | Model / Lip dimensions | | Material / color |
|---------------|------------------------|---|---|
| 102.040.357.* | SFU-R-40 | 3 | SI (tr), NR (br) |
| 102.070.234.* | SFU-R-70 | 6 | NBR (gr), SBR (br), SI (tr), NR (bg), NR (br) |
| 102.100.269.* | SFU-R-100 | 5 | SBR (br), NBR (gr), NR (br) |
| 102.200.350.* | SFU-R-200 | 5 | NR (w) |

Accessories

| Item no. | Suitable fittings | | |
|---------------|-------------------|------------------|------------------|
| | G1/8-female | G1/4-female | G1/2-female |
| 102.040.357.* | 270.234 (p. 478) | -- | -- |
| 102.070.234.* | -- | 270.179 (p. 478) | -- |
| 102.100.269.* | -- | 270.180 (p. 478) | -- |
| 102.200.350.* | -- | -- | 270.335 (p. 478) |

Dimensions

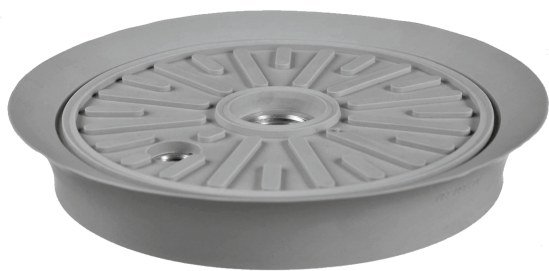


| Item no. | Ø D [mm] | Ø d1 [mm] | Ø d2 [mm] | Ø d3 [mm] | Ø d4 [mm] | Ø d5 [mm] | H [mm] | h1 [mm] | h2 [mm] | h3 [mm] |
|---------------|----------|-----------|-----------|-----------|-----------|-----------|--------|---------|---------|---------|
| 102.040.357.* | 40 | 26 | 17,5 | 21 | 8 | 21 | 12,5 | 2,9 | 6 | 2,5 |
| 102.070.234.* | 70 | 50 | 33 | 43 | 14 | 40 | 30 | 3,5 | 17 | 5,4 |
| 102.100.269.* | 100 | 70 | 50 | 61 | 23 | 59 | 33 | 4,6 | 19 | 4,7 |
| 102.200.350.* | 200 | 168 | 148 | 158 | 25 | 158 | 31 | 5 | 18,5 | 3,2 |

* When ordering please add the appropriate material code to the item no. You will find it in the foldout.



Flat vacuum cups for porous products – Series SFU-RT



Product Description

Patented flat vacuum cups for stacking of partially air-permeable plate material that air is drawn through. Separates uppermost plate layer from underlying plate layers. Soft sealing lip made of abrasion-resistant NR. Secure handling even of rough surfaces thanks to additional internal safety sealing lip. High stability under lateral forces. Cost-effective replacement of the wear part, as it comes in two parts.

Functional principle

Task: Access the top layer of porous materials without carrying along the lower layers.
Simultaneous intake (outer chamber) and selective blowing in a separate central chamber breaks adhesive forces between the layers.
The unwanted take-up of lower layers is prevented.
The air pressure level should be between 1 and 3 bar and is dependent on the nature of the product.

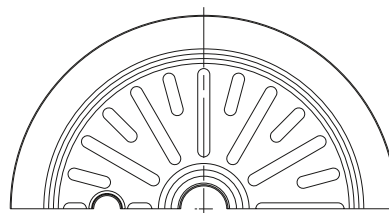
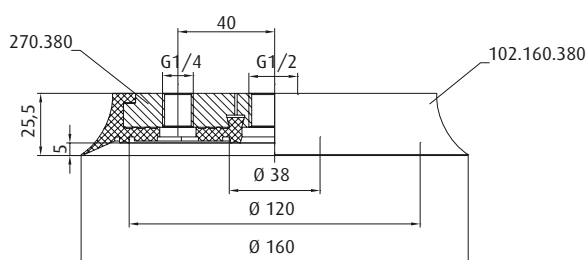
Ordering notes

Elastomer seal and retaining plate must be ordered separately.

Technical Data

| Item no. | Model / Lip dimensions | | Material / color | Suitable fittings |
|---------------|------------------------|---|------------------|-------------------|
| 102.160.380.4 | SFU-RT-160 | 6 | NR (bg) | 270.380 |

Dimensions



Gripping force [N] at vacuum level

| Item no. | Vacuum level | 20 % Vacuum | 30 % Vacuum | 40 % Vacuum | 50 % Vacuum | 60 % Vacuum | 70 % Vacuum |
|---------------|--------------------|-------------|-------------|-------------|-------------|-------------|-------------|
| 102.160.380.4 | Gripping force [N] | 83 | 137 | 186 | 230 | 280 | 324 |

* When ordering please add the appropriate material code to the item no. You will find it in the foldout.



Oval vacuum suction plates for textured surfaces – Series SOPL-R



Product Description

Oval vacuum cups for handling both rough surfaces and smooth, markedly uneven products. Connection via vulcanized aluminum plate.

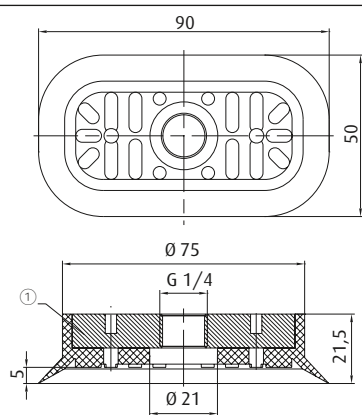
Advantage

- > Leak-free gripping of many difficult product surfaces thanks to extremely flexible, thinly tapered sealing lip
- > Cleats help prevent warping of the product
- > Optimum process reliability due to vulcanized backing plate, as well as additional internal safety sealing lip (190x90)

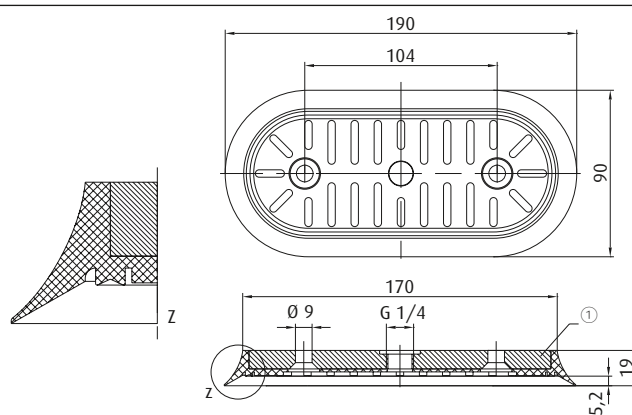
Technical Data

| Item no. | Model / Lip dimensions | Connection thread | Material / color |  | Weight [g] |
|------------------|------------------------|-------------------|------------------|--|------------|
| 130.90x50.113._* | SOPL-R-90X50 | G1/4-female | NR (bg) | 5 | 72 |
| 9.190x90.061._* | SOPL-R-190x90 | G1/4-female | NR (bg) | 5,5 | 295 |

Dimensions



90X50 mm



190x90 mm

① = Aluminum

* When ordering please add the appropriate material code to the item no. You will find it in the foldout.



Oval vacuum suction plates – Series SOPL-S and SOPL-A



Product Description

Oval vacuum cups, vulcanized, on a carrier plate of steel/aluminum for the handling of long, narrow products such as strips, profiles or frames. Rubberized support surfaces prevent deformation of the product and increase lateral stability.

Advantage

- > High suction force on a small footprint
- > Low marking
- > Optimal grip due to vulcanized steel carrier plate
- > Individual machines connection possible

Ordering notes

Customized drilling patterns available on request for Series SOPL-S

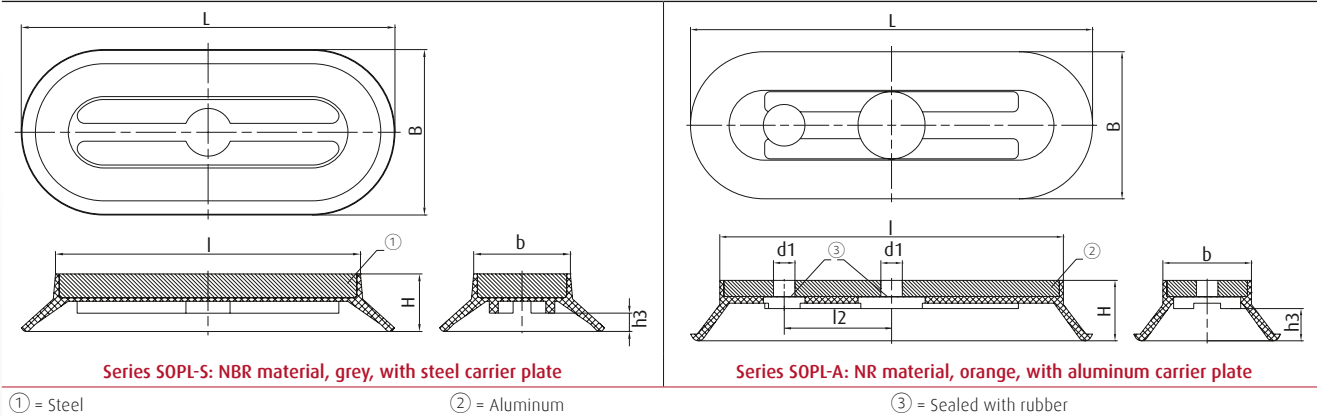
Technical Data

| Item no. | Material / color | | Weight [g] | Model / Lip dimensions | Support surfaces |
|--|------------------|----|------------|------------------------|------------------|
| Series SOPL-S: NBR material, grey, with steel carrier plate | | | | | |
| 9.200x40.010.* | NBR (gr) | 9 | 140 | SOPL-S-200x40 | lengthwise |
| 9.110x40.009.* | NBR (gr) | 9 | 122 | SOPL-S-110x40 | lengthwise |
| 9.125x55.012.* | NBR (gr) | 9 | 320 | SOPL-S-125x55 | lengthwise |
| 9.150x55.013.* | NBR (gr) | 7 | 255 | SOPL-S-150x55 | lengthwise |
| 9.200x55.014.* | NBR (gr) | 7 | 538 | SOPL-S-200x55 | lengthwise |
| 9.250x55.016.* | NBR (gr) | 8 | 770 | SOPL-S-250x55 | lengthwise |
| 9.300x55.019.* | NBR (gr) | 8 | 902 | SOPL-S-300x55 | lengthwise |
| 9.370x70.022.* | NBR (gr) | 10 | 1895 | SOPL-S-370x70 | lengthwise |
| 9.200x100.015.* | NBR (gr) | 8 | 595 | SOPL-S-200x100 | lengthwise |
| 9.280x100.017.* | NBR (gr) | 10 | 1880 | SOPL-S-280x100 | lengthwise |
| 9.450x130.025.* | NBR (gr) | 6 | 2660 | SOPL-S-450x130 | crosswise |
| 9.430x180.024.* | NBR (gr) | 6 | 3720 | SOPL-S-430x180 | selective |
| 9.580x180.029.* | NBR (gr) | 10 | 3500 | SOPL-S-580x180 | lengthwise |
| Series SOPL-A: NR material, orange, with aluminum carrier plate | | | | | |
| 9.100x55.020.* | NR (or) | 8 | 65 | SOPL-A-100x55 | lengthwise |
| 9.150x55.083.* | NR (or) | 8 | 114 | SOPL-A-150x55 | lengthwise |
| 9.200x55.020.* | NR (or) | 8 | 159 | SOPL-A-200x55 | lengthwise |
| 9.300x55.046.* | NR (or) | 8 | 300 | SOPL-A-300x55 | lengthwise |

* When ordering please add the appropriate material code to the item no. You will find it in the foldout.



Dimensions



| Item no. | L [mm] | B [mm] | l [mm] | b [mm] | l2 [mm] | Ø d1 [mm] | H [mm] | h3 [mm] |
|--|--------|--------|--------|--------|---------|-----------|--------|---------|
| Series SOPL-S: NBR material, grey, with steel carrier plate | | | | | | | | |
| 9.200x40.010._* | 195 | 36 | 176 | 15 | -- | -- | 19 | 6 |
| 9.110x40.009._* | 113 | 43 | 87 | 17 | -- | -- | 19 | 8,5 |
| 9.125x55.012._* | 126 | 56 | 103 | 33 | -- | -- | 19 | 6 |
| 9.150x55.013._* | 151 | 56 | 128 | 33 | -- | -- | 19 | 6 |
| 9.200x55.014._* | 200 | 55 | 178 | 33 | -- | -- | 19 | 6,3 |
| 9.250x55.016._* | 250 | 55 | 228 | 33 | -- | -- | 19 | 6 |
| 9.300x55.019._* | 300 | 55 | 227 | 33 | -- | -- | 19 | 6 |
| 9.370x70.022._* | 378 | 82 | 349 | 53 | -- | -- | 26 | 9 |
| 9.200x100.015._* | 190 | 90 | 161 | 61 | -- | -- | 22 | 8,5 |
| 9.280x100.017._* | 278 | 100 | 250 | 72 | -- | -- | 25 | 9 |
| 9.450x130.025._* | 449 | 131 | 420 | 102 | -- | -- | 20 | 6,5 |
| 9.430x180.024._* | 430 | 180 | 402 | 158 | -- | -- | 20 | 6 |
| 9.580x180.029._* | 579 | 179 | 570 | 150 | -- | -- | 25 | 9 |
| Series SOPL-A: NR material, orange, with aluminum carrier plate | | | | | | | | |
| 9.100x55.020._* | 99 | 54 | 78 | 33 | 25 | 8 | 22,5 | 9 |
| 9.150x55.083._* | 150 | 55 | 128 | 33 | 40 | 8 | 22,5 | 9 |
| 9.200x55.020._* | 201 | 56 | 178 | 33 | 50 | 8 | 22,5 | 9 |
| 9.300x55.046._* | 300 | 55 | 278 | 33 | 100 | 8 | 22,5 | 9 |

* When ordering please add the appropriate material code to the item no. You will find it in the foldout.



Flat vacuum suction plates with fine lips – Series SFPL-F



Product Description

Vacuum suction plates made of low-marking NBR blend for even, sensitive surfaces. Undrilled steel carrier plate allows an individual machine connection.

Advantage

- > Gentle product handling through thinly tapering suction lip
- > Large bearing surfaces prevent deformation of the product and increase the lateral stability
- > Optimal grip due to vulcanized steel carrier plate

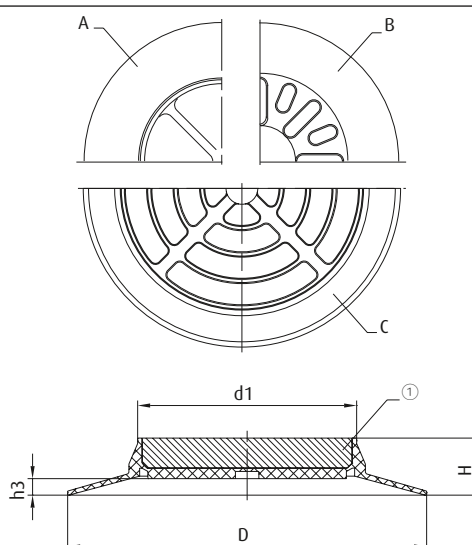
Ordering notes

Customized drilling patterns available on request

Technical Data

| Item no. | Model / Lip dimensions | | Weight [g] | Material / color |
|----------------|------------------------|----|------------|------------------|
| 152.055.092._* | SFPL-F-55 | 4 | 30 | NBR (gr) |
| 152.070.093._* | SFPL-F-70 | 4 | 65 | NBR (gr) |
| 152.105.094._* | SFPL-F-105 | 9 | 120 | NBR (gr) |
| 152.115.095._* | SFPL-F-115 | 4 | 280 | NBR (gr) |
| 152.140.096._* | SFPL-F-140 | 8 | 560 | NBR (gr) |
| 152.160.097._* | SFPL-F-160 | 8 | 780 | NBR (gr) |
| 152.180.067._* | SFPL-F-180 | 9 | 840 | NBR (gr) |
| 152.260.068._* | SFPL-F-260 | 13 | 2220 | NBR (gr) |
| 152.300.098._* | SFPL-F-300 | 7 | 3560 | NBR (gr) |

Dimensions



① = Vulcanized steel carrier plate

* When ordering please add the appropriate material code to the item no. You will find it in the foldout.



| Item no. | Ø D [mm] | Ø d1 [mm] | H [mm] | h3 [mm] | Type of contact surface |
|---------------|----------|-----------|--------|---------|-------------------------|
| 152.055.092.* | 56 | 31 | 11,5 | 3,5 | A |
| 152.070.093.* | 72 | 44 | 11,5 | 3,3 | A |
| 152.105.094.* | 105 | 65 | 22 | 9 | B |
| 152.115.095.* | 115 | 80 | 15 | 4 | A |
| 152.140.096.* | 140 | 100 | 23 | 7,5 | B |
| 152.160.097.* | 160 | 121 | 22 | 8 | A |
| 152.180.067.* | 180 | 120 | 23 | 9 | A |
| 152.260.068.* | 269 | 202 | 26 | 13 | A |
| 152.300.098.* | 300 | 242 | 27 | 7 | C |

* When ordering please add the appropriate material code to the item no. You will find it in the foldout.



Bellows vacuum suction plates, Softgrip – Series SBPL-SG




Product Description

Vacuum suction plate with 1.5 bellows for gentle handling of heavy but sensitive products (e.g. glass plates). Divided support surfaces prevent deformation of the product and provide a firm grip. Additional safety sealing lip on the support block positions the product orthogonally to the ground. Connection via an interlocking, snap-in aluminum plate.

Advantage

- > Very careful handling due to soft sealing lip and lightly compressing bellows
- > Swinging of the product is prevented by support block and security and sealing lip
- > Cost-effective replacement of worn seals

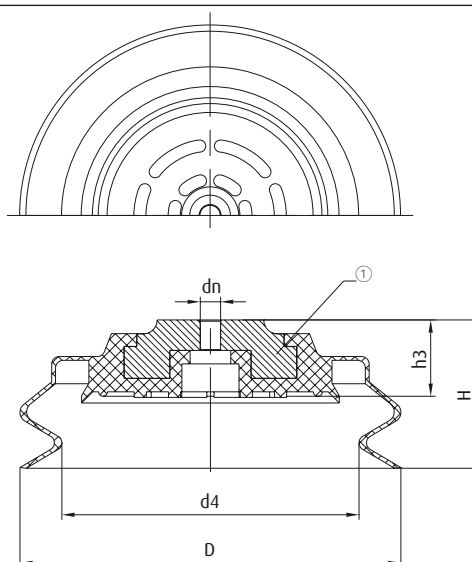
Technical Data

| Item no. | Model / Lip dimensions |  | Weight [g] | Material / color | Number of bellows |
|---------------|------------------------|---|------------|------------------|-------------------|
| 22.150.109._* | SBPL-SG-150 | 28 | 353 | NBR (sw) | 1,5 |
| 22.210.115._* | SBPL-SG-210 | 32 | 860 | NBR (sw) | 1,5 |

Accessories

| | |
|---------------|------------------------|
| | Suitable spare cups |
| Item no. | |
| 22.150.109._* | 23.150.090._* (p. 393) |
| 22.210.115._* | 23.210.009._* (p. 397) |

Dimensions



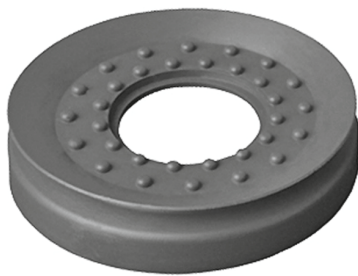
① = Aluminum

| Item no. | Ø D [mm] | Ø d4 [mm] | Ø dn [mm] | H [mm] | h3 [mm] |
|---------------|----------|-----------|-----------|--------|---------|
| 22.150.109._* | 150 | 117 | 8 | 58 | 30 |
| 22.210.115._* | 212 | 180 | 8 | 65 | 31 |

* When ordering please add the appropriate material code to the item no. You will find it in the foldout.



Flat vacuum cups with a short stroke - Series SFK-G



Product Description

Flat vacuum cups for even surfaces with minimal stroke. Particularly suitable for clamping elements. Connection via a snap-in, interlocking aluminum plate.

Advantage

- > Rubberized support surfaces prevent deformation of the product and increase lateral stability.
- > Cost-effective replacement of worn seals

Technical Data

| Item no. | Model / Lip dimensions | | Material / color |
|----------------|------------------------|-----|---------------------------|
| 154.065.003._* | SFK-G-65 | 3 | NBR (sw), SI (w), FKM (g) |
| 154.085.008._* | SFK-G-85 | 1,5 | NBR (sw), SI (w), FKM (g) |
| 154.110.014._* | SFK-G-110 | 1,5 | NBR (sw), SI (w), FKM (g) |
| 154.150.021._* | SFK-G-150 | 2 | NBR (sw), SI (w), FKM (g) |

Accessories

| Item no. | Suitable fittings | | | |
|----------------|-------------------|------------------|------------------|------------------|
| | G1/8-female | G1/4-female | G3/8-female | G1/2-female |
| 154.065.003._* | 270.158 (p. 478) | 270.264 (p. 478) | 270.161 (p. 478) | 270.286 (p. 478) |
| 154.085.008._* | 270.158 (p. 478) | 270.264 (p. 478) | 270.161 (p. 478) | 270.286 (p. 478) |
| 154.110.014._* | -- | 270.224 (p. 478) | 270.167 (p. 478) | 270.266 (p. 478) |
| 154.150.021._* | -- | 270.171 (p. 478) | 270.173 (p. 478) | 270.268 (p. 478) |

Dimensions

| | |
|----------------|----------------------------|
| <p>Ø 65 mm</p> | <p>Ø 85 114 153 mm</p> |
|----------------|----------------------------|

| Item no. | Ø D [mm] | Ø d1 [mm] | Ø d2 [mm] | Ø d3 [mm] | Ø d4 [mm] | H [mm] | h1 [mm] | h2 [mm] | h3 [mm] |
|----------------|----------|-----------|-----------|-----------|-----------|--------|---------|---------|---------|
| 154.065.003._* | 65 | 67 | 59 | 63 | 27 | 17,5 | 6,3 | 9 | 3 |
| 154.085.008._* | 85 | 68 | 58 | 62 | 27 | 17 | 7 | 10 | 1,2 |
| 154.110.014._* | 114 | 96 | 88 | 91 | 53 | 17 | 8 | 11 | 1,2 |
| 154.150.021._* | 153 | 133 | 118 | 125 | 64 | 23 | 11 | 15 | 3 |

* When ordering please add the appropriate material code to the item no. You will find it in the foldout.



Temperature-resistant, felt-coated vacuum cups – Series SX-F

MINIMUM
MARKING



Product Description

Almost mark-free special vacuum cup for high temperature requirements, e.g. in the glass industry. Special felt pad vulcanized to elastomer carrier. Migration of silicone particles is prevented by vapour-deposited aluminum layer. Connection up to Ø 70 mm by means of plug nipple, from Ø 90 mm with bolted bracket plate.

Advantage

- > Temperature resistant up to 550 °C
- > Almost mark-free
- > Cost-effective replacement of worn seals

Note

There is a small leak at first use resulting from the texture of the special felt, but after a brief period of use this will be significantly reduced by the thickening of the felt layer.

Technical Data

| Item no. | Model / Lip dimensions | | Weight [g] | Max. operating temperature [°C] | Material / color | Number of bellows |
|---------------|------------------------|----|------------|---------------------------------|-------------------------|-------------------|
| 26.025.009._* | SX-F-25 | 2 | 6 | 550 | SI (tr/ge) | -- |
| 26.037.010._* | SX-F-40 | 3 | 10 | 550 | SI (tr/ge) | -- |
| 26.070.011._* | SX-F-70 | 7 | 24 | 550 | SI (tr/ge) | -- |
| 26.090.001._* | SX-F-90 | 17 | 80 | 550 (SI), 350 (FKM) | SI (tr/ge), FKM (sw/ge) | 1,5 |
| 26.120.002._* | SX-F-120 | 18 | 140 | 350 | FKM (sw/ge) | 1,5 |
| 26.160.003._* | SX-F-160 | 18 | 205 | 350 | FKM (sw/ge) | 1,5 |

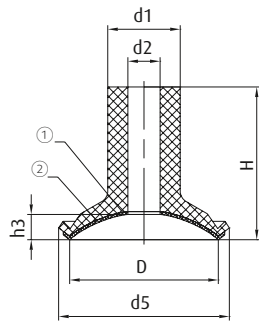
Accessories

| Item no. | Suitable fittings | | | | |
|---------------|-------------------|------------------|------------------|------------------|------------------|
| | G1/8-male | G1/8-female | G1/4-male | G1/4-female | G3/8-female |
| 26.025.009._* | 270.132 (p. 455) | 270.114 (p. 460) | 270.208 (p. 464) | 270.178 (p. 470) | -- |
| 26.037.010._* | 270.132 (p. 455) | 270.114 (p. 460) | 270.208 (p. 464) | 270.178 (p. 470) | -- |
| 26.070.011._* | 270.132 (p. 455) | 270.114 (p. 460) | 270.208 (p. 464) | 270.178 (p. 470) | -- |
| 26.090.001._* | -- | -- | -- | -- | 270.400 (p. 475) |
| 26.120.002._* | -- | -- | -- | -- | 270.402 (p. 475) |
| 26.160.003._* | -- | -- | -- | -- | 270.404 (p. 475) |

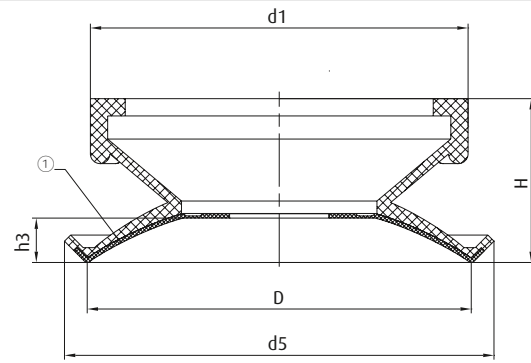
* When ordering please add the appropriate material code to the item no. You will find it in the foldout.



Dimensions



Ø 24 | 37 | 67 mm



Ø 89 | 120 | 150 mm

① = Felt pads

② = For silicone vacuum cups with silicone membranes: evaporated aluminum layer

| Item no. | Ø D [mm] | Ø d1 [mm] | Ø d2 [mm] | Ø d5 [mm] | H [mm] | h3 [mm] |
|---------------|----------|-----------|-----------|-----------|--------|---------|
| 26.025.009._* | 24 | 16 | 8 | 29 | 36 | 3,3 |
| 26.037.010._* | 37 | 18 | 8 | 42 | 38 | 6,5 |
| 26.070.011._* | 67 | 21 | 8 | 71 | 36 | 8 |
| 26.090.001._* | 89 | 87 | -- | 99 | 38 | 10,5 |
| 26.120.002._* | 120 | 108 | -- | 129 | 45 | 17,5 |
| 26.160.003._* | 150 | 130 | -- | 161 | 48 | 16,5 |

* When ordering please add the appropriate material code to the item no. You will find it in the foldout.